

Commercial Land For Sale or Build-to-Suit



East Metro Business Park



The East Metro Business Park located at the intersection of Interstate 39/90/94 and Highway 51 just north of Madison in Burke (DeForest) offers many options for mid-large retail and light industrial/flex users. Already home to the Gander Outdoor and Camping World stores, this high visibility and easy access business park offers many opportunities!

Contact Info: Paul Molinaro
Direct: (608) 661-8803
Cell: (608) 628-5427
paulm@buildtosuit.com

www.buildtosuit.com

East Metro Business Park Offering Summary



Offering.....Build-to-Suit or For Sale

Type.....Retail or Industrial/Flex

Build-to-Suit Space.....10,000 sf - 40,000+ sf

Lease Rate.....Build-Out Dependent

Lot Pricing.....See Lot Price Page

Available Lot Sizes.....2.18 & 3.79 Acres



Contact Info: Paul Molinaro
Direct: (608) 661-8803
Cell: (608) 628-5427
paulm@buildtosuit.com

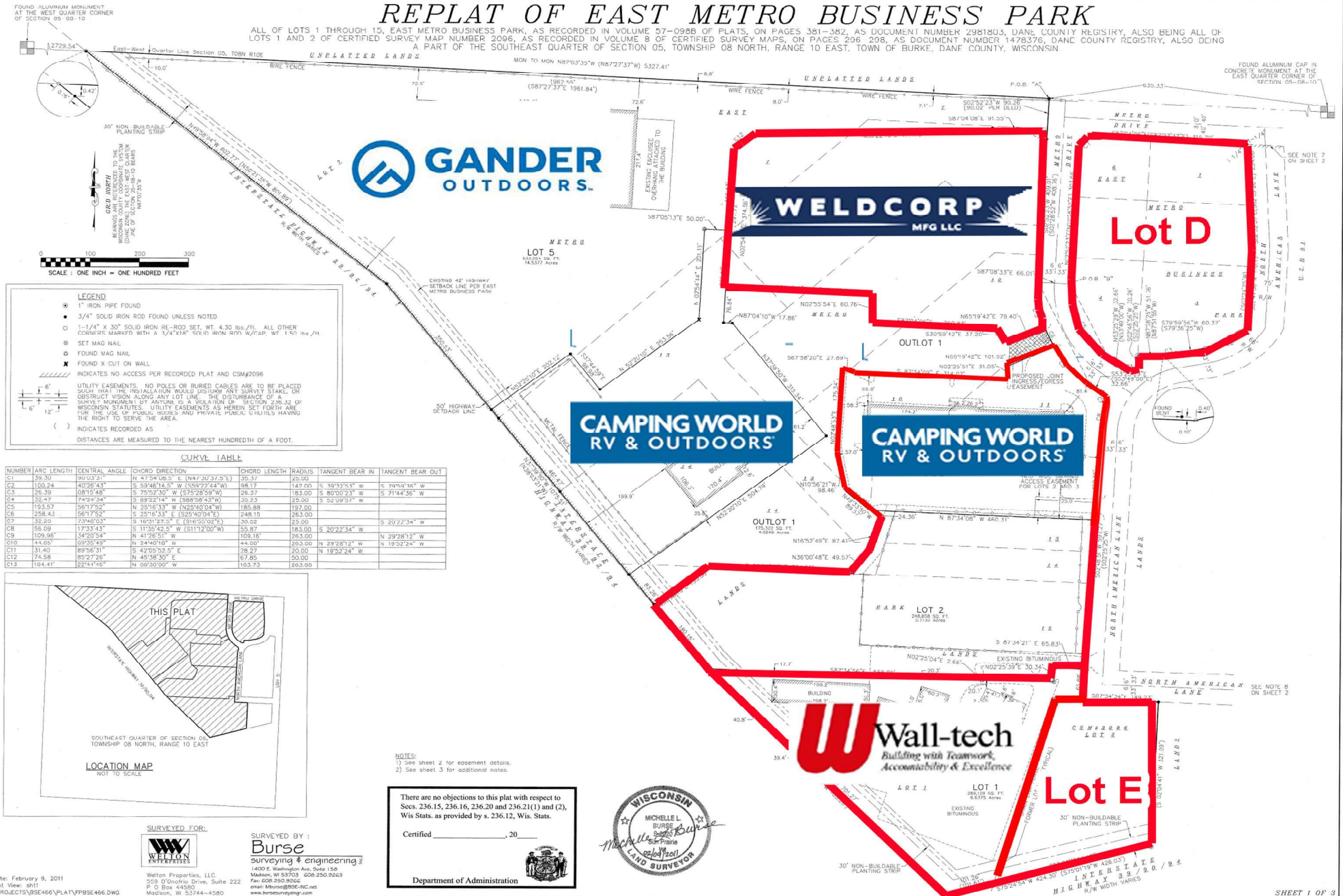
www.buildtosuit.com

East Metro Business Park



REPLAT OF EAST METRO BUSINESS PARK

ALL OF LOTS 1 THROUGH 15, EAST METRO BUSINESS PARK, AS RECORDED IN VOLUME 57-0986 OF PLATS, ON PAGES 381-382, AS DOCUMENT NUMBER 2981803, DANE COUNTY REGISTRY, ALSO BEING ALL OF LOTS 1 AND 2 OF CERTIFIED SURVEY MAP NUMBER 2096, AS RECORDED IN VOLUME 8 OF CERTIFIED SURVEY MAPS, ON PAGES 209-208, AS DOCUMENT NUMBER 1478376, DANE COUNTY REGISTRY, ALSO BEING A PART OF THE SOUTHWEST QUARTER OF SECTION 05, TOWNSHIP 08 NORTH, RANGE 10 EAST, TOWN OF BURKE, DANE COUNTY, WISCONSIN.



FOUND ALUMINUM MONUMENT AT THE WEST QUARTER CORNER OF SECTION 05-08-10

FOUND ALUMINUM CAP IN CONCRETE MONUMENT AT THE EAST QUARTER CORNER OF SECTION 05-08-10



LEGEND

- 1" IRON PIPE FOUND
- 3/4" SOLID IRON ROD FOUND UNLESS NOTED
- 1-1/4" x 30" SOLID IRON RE-ROD SET, WT. 4.30 lbs./ft., ALL OTHER CORNERS MARKED WITH A 1/2" x 1/4" SOLID IRON ROD SET, WT. 1.50 lbs./ft.
- SET MAG NAIL
- FOUND MAG NAIL
- ✕ FOUND X CUT ON WALL

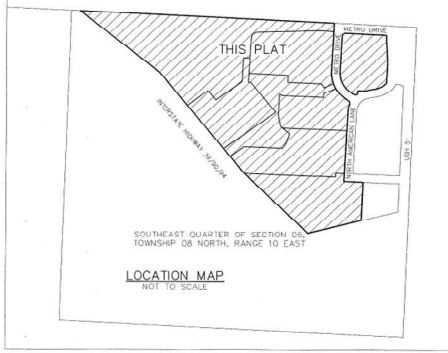
INDICATES NO ACCESS PER RECORDED PLAT AND CSM#2096

UTILITY EASEMENTS, NO POLES OR BURIED CABLES ARE TO BE PLACED SUCH THAT THE INSTALLATION WOULD OBSTRUCT ANY SURVEY STAKE, OR OBSTRUCT VISION ALONG ANY LOT LINE. THE DISTURBANCE OF A SURVEY MONUMENT BY ANYONE IS A VIOLATION OF SECTION 236.32 OF WISCONSIN STATUTES. UTILITY EASEMENTS AS HEREIN SET FORTH ARE FOR THE USE OF PUBLIC UTILITIES AND PRIVATE PUBLIC UTILITIES HAVING THE RIGHT TO SERVE THE AREA.

() INDICATES RECORDED AS DISTANCES ARE MEASURED TO THE NEAREST HUNDREDTH OF A FOOT.

CURVE TABLE

NUMBER	ARC LENGTH	CENTRAL ANGLE	CHORD DIRECTION	CHORD LENGTH	RADIUS	TANGENT BEAR IN	TANGENT BEAR OUT
C1	59.30	90.0331°	N 47°04'03.5" E (N47°03'37.5" E)	35.37	25.00		
C2	100.24	49°26'43"	S 59°46'14.5" W (S59°22'44" W)	98.17	142.00	S 10°12'51" W	S 79°49'16" W
C3	26.39	08°15'48"	S 75°52'30" W (S75°28'59" W)	26.37	185.00	S 80°00'23" W	S 71°44'36" W
C4	32.47	74°24'54"	S 69°22'14" W (S68°58'43" W)	30.23	25.00	S 24°09'57" W	S 71°44'36" W
C5	193.57	56°17'52"	N 25°16'33" W (N25°40'04" E)	185.88	192.00		
C6	258.43	56°17'52"	S 25°16'33" E (S25°40'04" E)	248.15	263.00		
C7	32.20	72°48'03"	S 16°01'22.57" E (S16°05'02" E)	30.02	23.00		
C8	56.09	17°33'43"	S 11°35'42.5" W (S11°12'00" W)	55.87	183.00	S 20°22'34" W	S 20°22'34" W
C9	109.96	34°20'54"	N 41°26'51" W	109.16	263.00	N 29°28'12" W	N 29°28'12" W
C10	44.02	14°02'49"	N 24°40'16" W	44.60	253.00	N 23°28'12" W	N 19°32'24" W
C11	31.40	89°56'31"	S 42°05'52.5" E	28.27	20.00	N 19°52'24" W	
C12	74.58	85°27'26"	N 45°38'30" E	67.85	50.00		
C13	104.41	22°44'46"	N 69°30'00" W	103.73	263.00		



NOTES:
 1) See sheet 2 for easement details.
 2) See sheet 3 for additional notes.

There are no objections to this plat with respect to Secs. 236.15, 236.16, 236.20 and 236.21(1) and (2), Wis Stats. as provided by s. 236.12, Wis. Stats.

Certified _____, 20__

Department of Administration

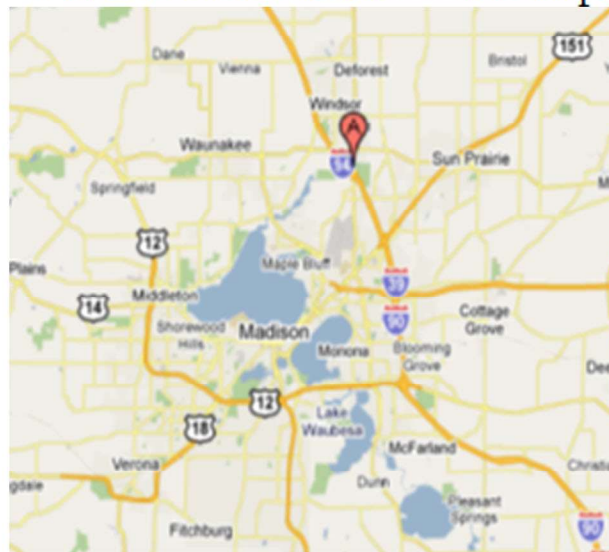


East Metro Business Park Lot Description and Price List



East Metro Business Park Lots				
<u>Lot #</u>	<u>SQ. FT.</u>	<u>Acres</u>	<u>Price/SF</u>	<u>Notes</u>
A	186,703	4.48	N/A	Fully leased to Wall-Tech.
B	248,727	9.12	N/A	Fully leased to Camping World.
C	255,154	5.86	N/A	Weldcorp Mfg. Headquarters.
D	165,166	3.79	Call	Lot D is a corner lot located at the entrance to the East Metro Business Park and has frontage on Highway 51. This is a high visibility/easy access location with drive-by traffic on Metro Drive created by the Gander Outdoors & Camping World stores.
E	95,101	2.18	Call	Lot E consists of 2.18 acres of land available for development with visibility from the interstate and easy access.

East Metro Business Park Map



Contact Info: Paul Molinaro
 Direct: (608) 661-8803
 Cell: (608) 628-5427
 paulm@buildtosuit.com

www.buildtosuit.com

DISCLOSURE TO NON-RESIDENTIAL CUSTOMERS

1 Prior to negotiating on your behalf the brokerage firm, or an agent associated with the firm, must provide you the
2 following disclosure statement:

3 **DISCLOSURE TO CUSTOMERS** You are a customer of the brokerage firm (hereinafter Firm). The Firm is either an agent
4 of another party in the transaction or a subagent of another firm that is the agent of another party in the transaction. A
5 broker or a salesperson acting on behalf of the Firm may provide brokerage services to you. Whenever the Firm is
6 providing brokerage services to you, the Firm and its brokers and salespersons (hereinafter Agents) owe you, the
7 customer, the following duties:

- 8 (a) The duty to provide brokerage services to you fairly and honestly.
- 9 (b) The duty to exercise reasonable skill and care in providing brokerage services to you.
- 10 (c) The duty to provide you with accurate information about market conditions within a reasonable time if you request
11 it, unless disclosure of the information is prohibited by law.
- 12 (d) The duty to disclose to you in writing certain Material Adverse Facts about a property, unless disclosure of the
13 information is prohibited by law (see lines 42-51).
- 14 (e) The duty to protect your confidentiality. Unless the law requires it, the Firm and its Agents will not disclose your
15 confidential information or the confidential information of other parties (see lines 23-41).
- 16 (f) The duty to safeguard trust funds and other property held by the Firm or its Agents.
- 17 (g) The duty, when negotiating, to present contract proposals in an objective and unbiased manner and disclose the
18 advantages and disadvantages of the proposals.

19 Please review this information carefully. An Agent of the Firm can answer your questions about brokerage services,
20 but if you need legal advice, tax advice, or a professional home inspection, contact an attorney, tax advisor, or home
21 inspector. This disclosure is required by section 452.135 of the Wisconsin statutes and is for information only. It is a
22 plain-language summary of the duties owed to a customer under section 452.133(1) of the Wisconsin statutes.

23 **CONFIDENTIALITY NOTICE TO CUSTOMERS** The Firm and its Agents will keep confidential any information given to the
24 Firm or its Agents in confidence, or any information obtained by the Firm and its Agents that a reasonable person
25 would want to be kept confidential, unless the information must be disclosed by law or you authorize the Firm to
26 disclose particular information. The Firm and its Agents shall continue to keep the information confidential after the
27 Firm is no longer providing brokerage services to you.

28 The following information is required to be disclosed by law:

- 29 1. Material Adverse Facts, as defined in Wis. Stat. § 452.01(5g) (see lines 42-51).
- 30 2. Any facts known by the Firm or its Agents that contradict any information included in a written inspection
31 report on the property or real estate that is the subject of the transaction.

32 To ensure that the Firm and its Agents are aware of what specific information you consider confidential, you may
33 list that information below (see lines 35-41) or provide that information to the Firm or its Agents by other means. At a
34 later time, you may also provide the Firm or its Agents with other Information you consider to be confidential.

35 **CONFIDENTIAL INFORMATION:** _____

36 _____

37 _____

38 **NON-CONFIDENTIAL INFORMATION** (the following information may be disclosed by the Firm and its Agents): _____

39 _____

40 _____

41 _____ (Insert information you authorize to be disclosed, such as financial qualification information.)

42 **DEFINITION OF MATERIAL ADVERSE FACTS**

43 A "Material Adverse Fact" is defined in Wis. Stat. § 452.01(5g) as an Adverse Fact that a party indicates is of such
44 significance, or that is generally recognized by a competent licensee as being of such significance to a reasonable
45 party, that it affects or would affect the party's decision to enter into a contract or agreement concerning a transaction
46 or affects or would affect the party's decision about the terms of such a contract or agreement.

47 An "Adverse Fact" is defined in Wis. Stat. § 452.01(1e) as a condition or occurrence that a competent licensee
48 generally recognizes will significantly and adversely affect the value of the property, significantly reduce the structural
49 integrity of improvements to real estate, or present a significant health risk to occupants of the property; or information
50 that indicates that a party to a transaction is not able to or does not intend to meet his or her obligations under a
51 contract or agreement made concerning the transaction.

52 **NOTICE ABOUT SEX OFFENDER REGISTRY** You may obtain information about the sex offender registry and persons
53 registered with the registry by contacting the Wisconsin Department of Corrections on the Internet at
54 <http://www.doc.wi.gov> or by telephone at 608-240-5830.

No representation is made as to the legal validity of any provision or the adequacy of any provision in any specific transaction.
Copyright © 2016 by Wisconsin REALTORS® Association Drafted by Attorney Debra Peterson Conrad