

Property Data Sheet

8830 N Greenview Drive
Middleton, WI 53562

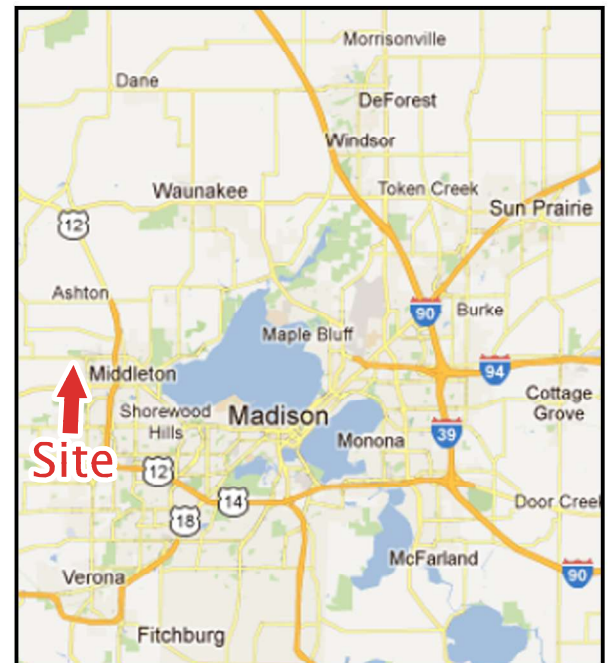


This 77,840 sf multi-tenant distribution/industrial building features a hybrid concrete tilt up/pre-engineered metal building, varying office build-out, 28' to 32' ceilings, 12 loading docks, 6 drive-in-doors, and an ESFR sprinkler system.



Property Availability/Details

Building Size:	77,840 sf
Site Size:	5.59 acres
Tenancy:	Multi-Tenant (3)
Vacancy (2/1/23):	50.36%
Loading Docks:	12
Drive-In-Doors:	6
Ceiling Heights:	28'-32'
Office Space:	Yes
Sprinkler System:	Yes
Year Built:	2001



Contact Info: Paul Molinaro
Direct: (608) 661-8803
Cell: (608) 628-5427
paulm@buildtosuit.com

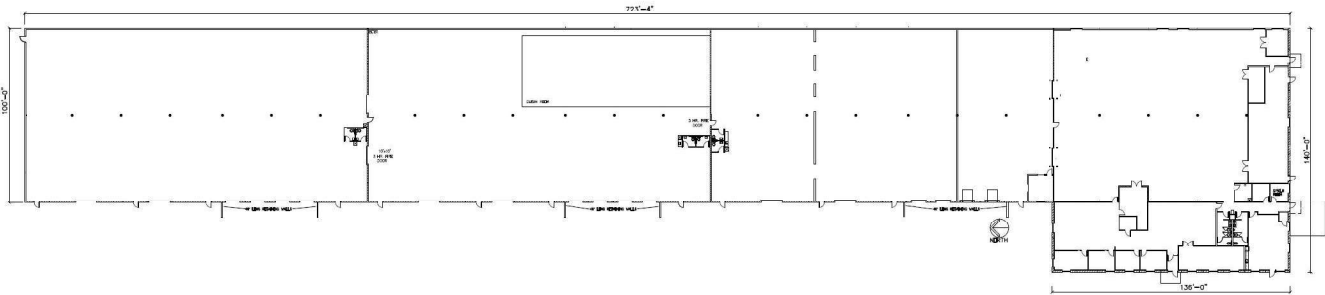
www.buildtosuit.com

Property Data Sheet

8830 N Greenview Drive
Middleton, WI 53562



Floor Plan



77,840 sf

Contact Info: Paul Molinaro
Direct: (608) 661-8803
Cell: (608) 628-5427
paulm@buildtosuit.com

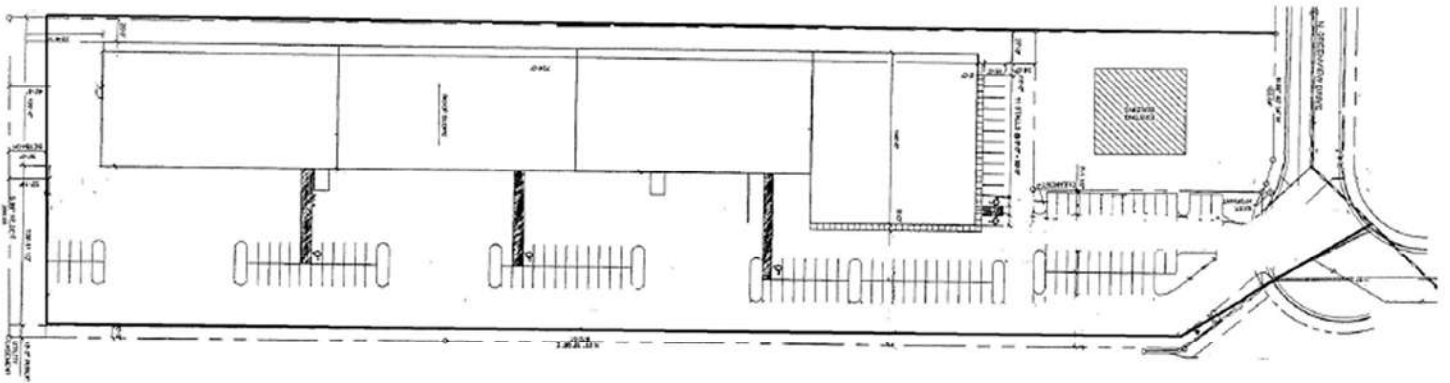
www.buildtosuit.com

Property Data Sheet

8830 N Greenview Drive
Middleton, WI 53562



Site Plan



Contact Info:

Paul Molinaro
Direct: (608) 661-8803
Cell: (608) 628-5427
paulm@buildtosuit.com

www.buildtosuit.com