

Property Data Sheet

2222 Pleasant View Road
Middleton, WI 53562

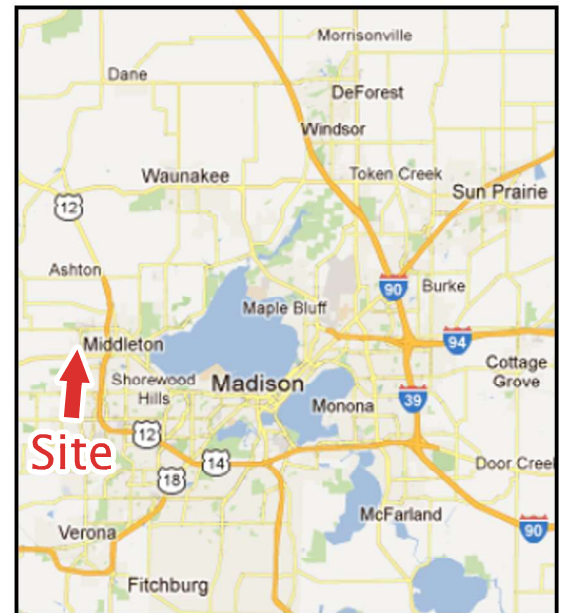


This fully leased 19,500 sf multi-tenant industrial/flex and warehouse building features a pre-engineered metal building construction with architectural brick, varying office build-out, 16'+ ceilings, 1 loading dock, 5 drive-in-doors, and ample parking.



Property Availability/Details

Building Size:	19,500 sf
Site Size:	2.00 acres
Tenancy:	Multi-Tenant (4)
Vacancy (1/1/23):	0%
Loading Docks:	1
Drive-In-Doors:	5
Ceiling Heights:	16'+
Office Space:	Yes
Sprinkler System:	No
Year Built:	1995



Contact Info: Paul Molinaro
Direct: (608) 661-8803
Cell: (608) 628-5427
paulm@buildtosuit.com

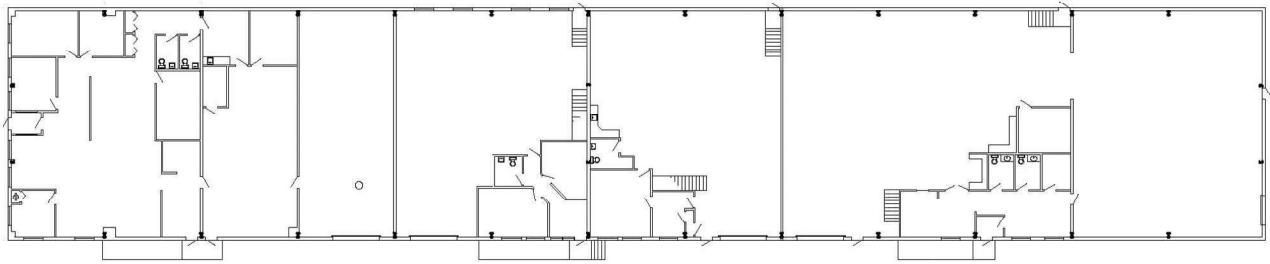
www.buildtosuit.com

Property Data Sheet

2222 Pleasant View Road
Middleton, WI 53562



Floor Plan



Contact Info:

Paul Molinaro
Direct: (608) 661-8803
Cell: (608) 628-5427
paulm@buildtosuit.com

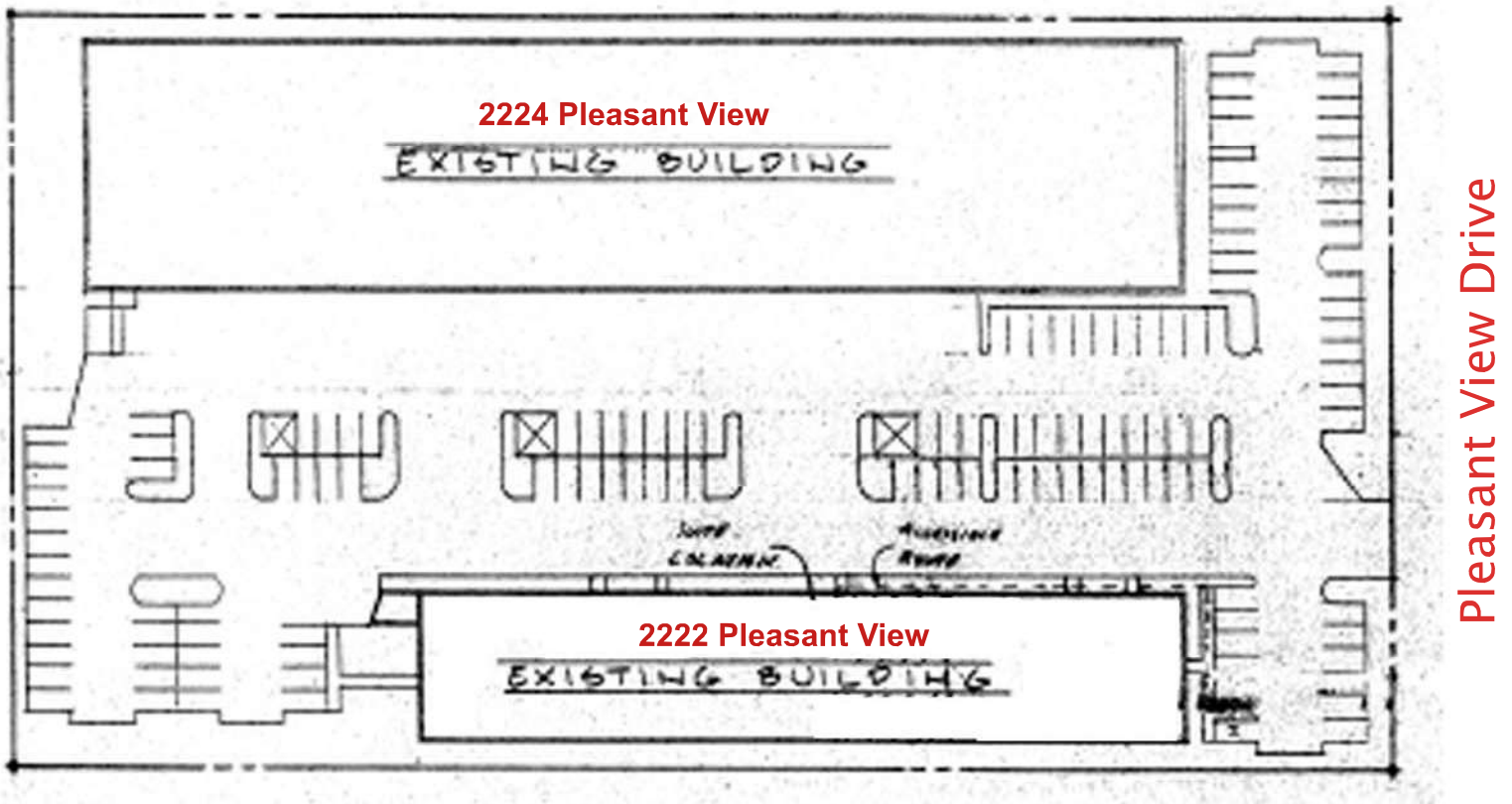
www.buildtosuit.com

Property Data Sheet

2222 Pleasant View Road
Middleton, WI 53562



Site Plan



Contact Info:

Paul Molinaro
Direct: (608) 661-8803
Cell: (608) 628-5427
paulm@buildtosuit.com

www.buildtosuit.com

2222 Pleasant View Road Submarket Aerial

