

# Property Data Sheet

2140 W Greenview Drive  
Middleton, WI 53562

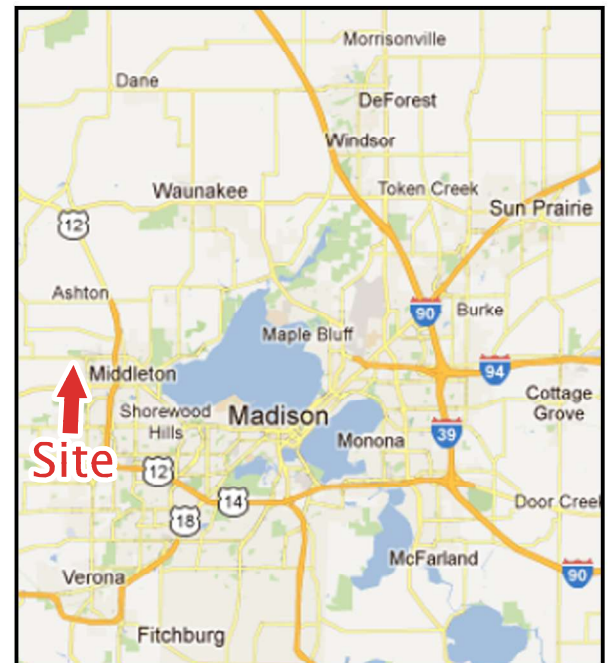


This fully leased, 30,800 sf multi-tenant industrial/flex building features a hybrid framed stucco/pre-engineered metal building construction, varying office build-out, 16' to 18' ceilings, 4 loading docks, 6 drive-in-doors, and a sprinkler system.



## Property Availability/Details

Building Size:	30,800 sf
Site Size:	1.89 acres
Tenancy:	Multi-Tenant (6)
Vacancy (1/1/2023):	0%
Loading Docks:	4
Drive-In-Doors:	6
Ceiling Heights:	16'-18'
Office Space:	Yes
Sprinkler System:	Yes
Year Built:	1995



**Contact Info:** Paul Molinaro  
Direct: (608) 661-8803  
Cell: (608) 628-5427  
paulm@buildtosuit.com

[www.buildtosuit.com](http://www.buildtosuit.com)

# 2140 W Greenview Drive Submarket Aerial



# Property Data Sheet

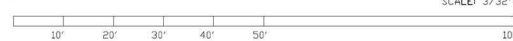
2140 W Greenview Drive  
Middleton, WI 53562



## Floor Plan



FLOOR PLAN- 2140 W. Greenview Drive Middleton WI.



## W Greenview Drive

### Contact Info:

Paul Molinaro  
Direct: (608) 661-8803  
Cell: (608) 628-5427  
paulm@buildtosuit.com

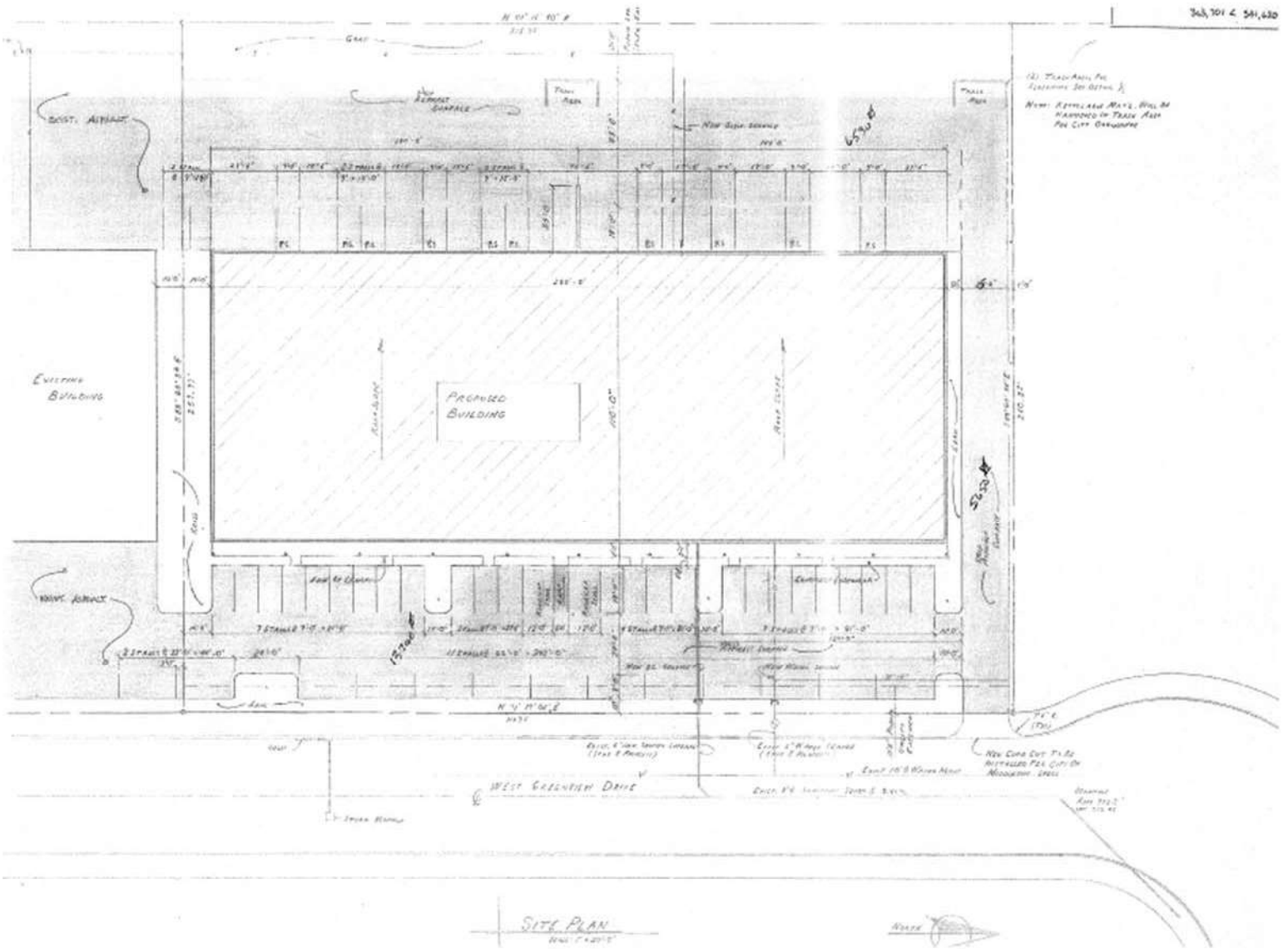
[www.buildtosuit.com](http://www.buildtosuit.com)

# Property Data Sheet

2140 W Greenview Drive  
Middleton, WI 53562



## Site Plan



Contact Info: Paul Molinaro  
Direct: (608) 661-8803  
Cell: (608) 628-5427  
paulm@buildtosuit.com

[www.buildtosuit.com](http://www.buildtosuit.com)