

# Property Data Sheet

2101-2113 Eagle Drive  
Middleton, WI 53562

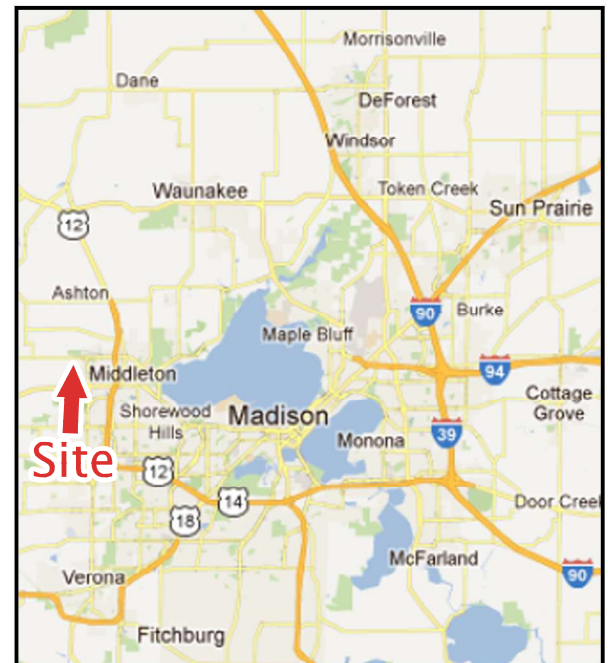


This fully leased, 30,492 sf multi-tenant building features a pre-engineered metal building construction, decorative brick features, varying office build-outs, 4 loading docks, 3 drive-in doors and frontage on Highway 14.



## Property Availability/Details

Building Size:	30,492 sf
Site Size:	2.12 acres
Tenancy:	Multi-tenant (4)
Vacancy (1/1/23):	0.00%
Loading Docks:	4
Drive-In-Doors:	3
Ceiling Heights:	20'+
Office Space:	Yes
Sprinkler System:	Yes
Year Built:	1993



**Contact Info:** Paul Molinaro  
Direct: (608) 661-8803  
Cell: (608) 628-5427  
paulm@buildtosuit.com

[www.buildtosuit.com](http://www.buildtosuit.com)

# 2101-2113 Eagle Drive Submarket Aerial



# Property Data Sheet

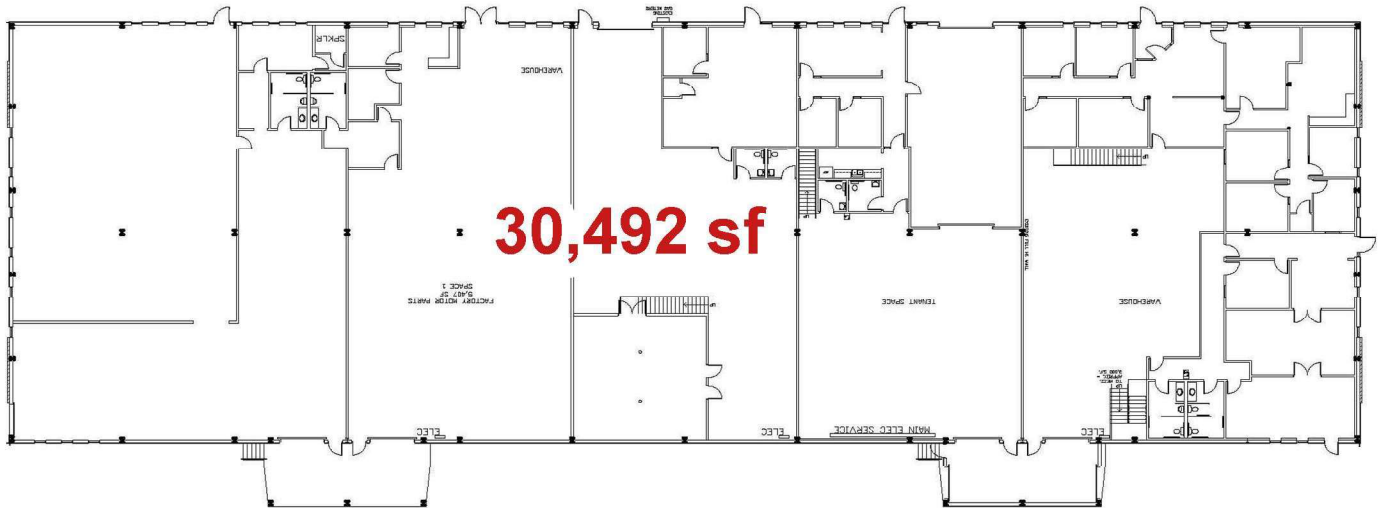
2101-2113 Eagle Drive  
Middleton, WI 53562



## Floor Plan

Eagle Drive

Highway 14/University Ave



### Contact Info:

Paul Molinaro  
Direct: (608) 661-8803  
Cell: (608) 628-5427  
paulm@buildtosuit.com

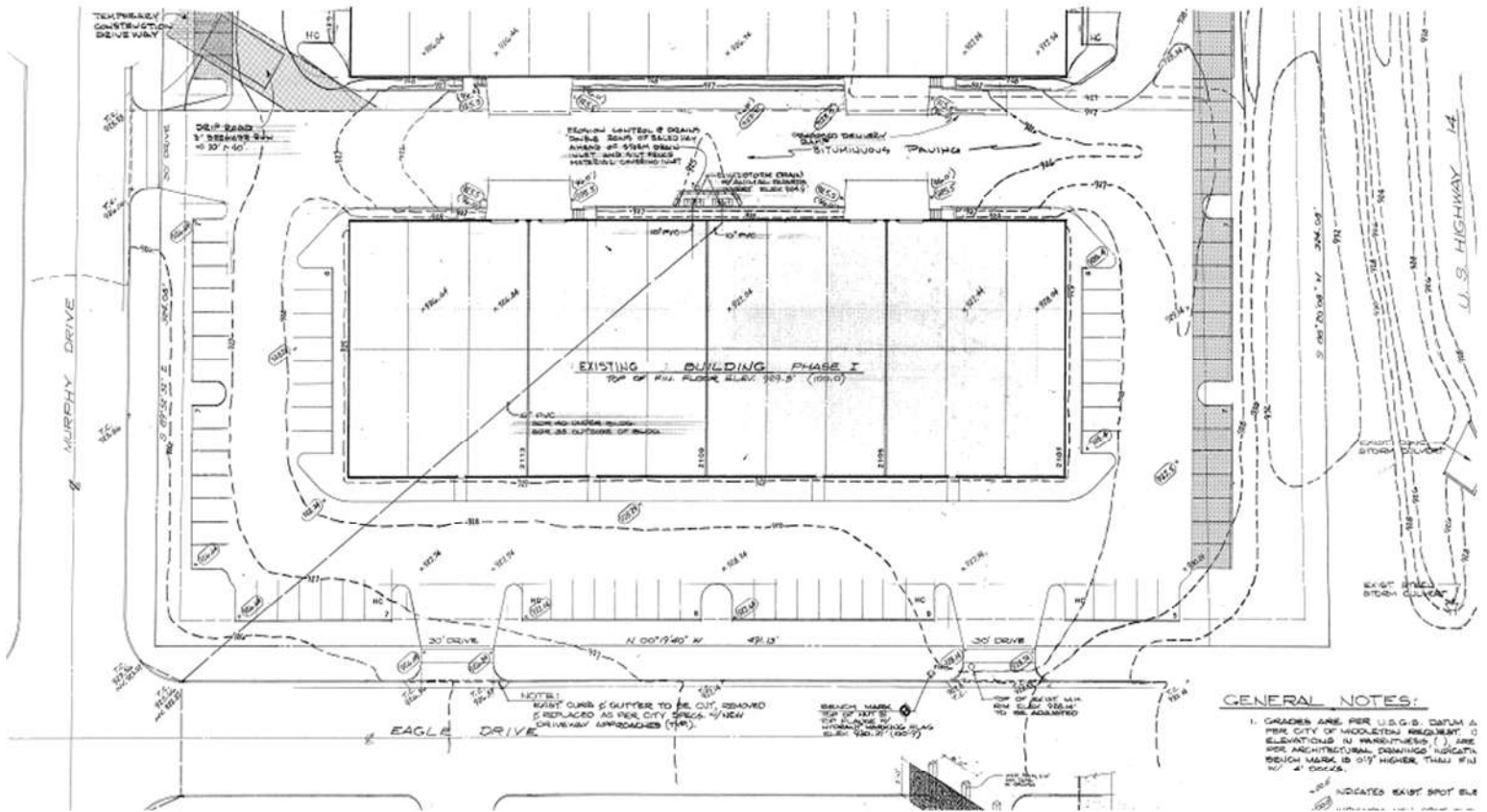
[www.buildtosuit.com](http://www.buildtosuit.com)

# Property Data Sheet

2101-2113 Eagle Drive  
Middleton, WI 53562



## Site Plan



Contact Info: Paul Molinaro  
Direct: (608) 661-8803  
Cell: (608) 628-5427  
paulm@buildtosuit.com

[www.buildtosuit.com](http://www.buildtosuit.com)